

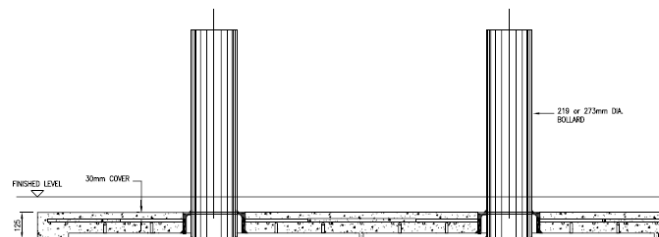
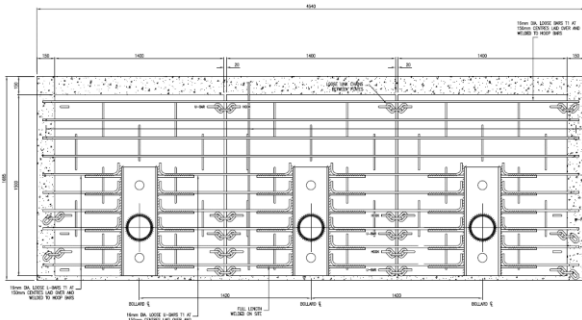


## PAS68 Static Bollards – APT40SH



Eagle Automation have a full and wide range of PAS68 tested bollards. Our static bollard range includes the world's first surface mount bollard – 30SM, an ultra-shallow foundation bollard – 40SH, a shallow foundation single unit bollard – 30SH and mid depth foundation bollards – 30/40/50ST. We also offer a range of different diameters with many of our bollards having removable options. Automated products include full depth & shallow foundation rising bollards with Zero penetration at 30mph – 30A, 30AT, and a full depth 50mph bollard – 50A.

- PAS68: V/7500(N2)/64/90:4.7/9.2
- Bollard tested with N2 7.5ton vehicle at 40mph / 64kmh
- Diameter: 272mm (tested) also available in 219mm
- Height: 1000mm above FFL
- Finish: Painted / Optional Stainless Steel Sleeve
- Supplied pre-fabricated with base plate, additional re-bar required.
- Foundation: 125mm, plus allowance for 75mm topping
- Static fixed and removable options



Raising Standards  
Safety Assured

