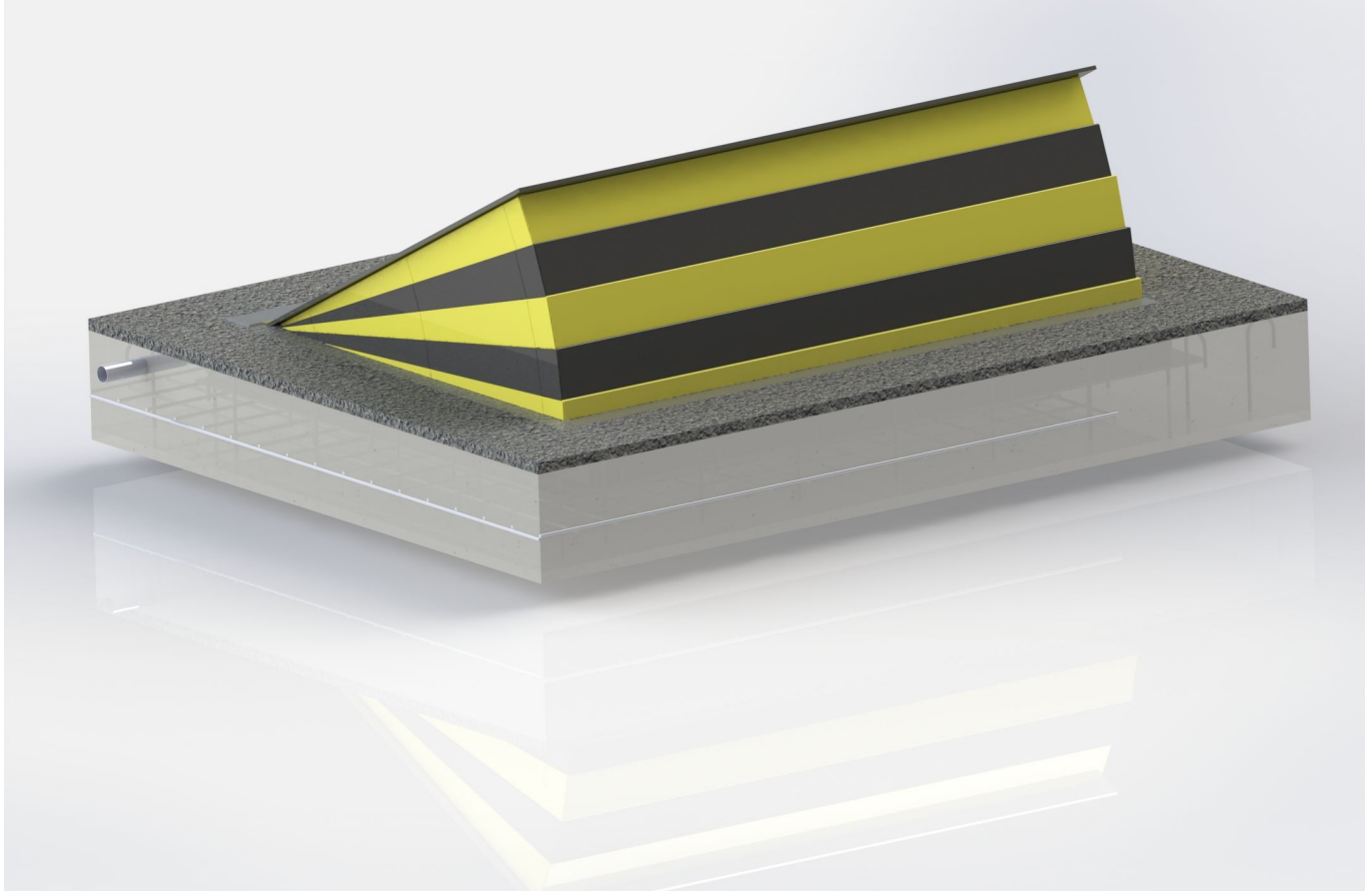


PAS68 Rising Blockers EAG05000



Product Summary

Having previously acquired the Intellectual Property Rights to the APT Security Systems PAS68 rated and impact tested product range, we have since developed the product, successfully testing a new IWA14-1 rated blocker. We now have 3 PAS68 or IWA14-1 rated rising blockers in our range which cater for every possible requirement. This includes the Titan II Shallow mount, the Titan true surface mount unit and the Titan Deep.

Titan II Shallow or Titan Surface Mount Blocker

- Tested as a shallow mount blocker with the N2A 7.2 ton vehicle at 80kph.
- Tested as a true surface mount blocker with the N3 7.5 ton vehicle at 80kph.
- Tested in the UK to PAS68 & IWA14-1 standards with a 3m blocker width.
- Manufactured from heavy duty steel sections fully welded
- Tread plates 10mm thick (over plain) durbar
- Surface mounting substantially reduces installation time and cost
- The Shallow Mounted Road Blocker has been designed for axle weights in excess

PAS68 Rising Blockers EAG05000

of 12 tonne

- Normal operating time of 6-8 seconds

PAS68 Rising Blockers EAG05000

Titan Deep Mount Blocker

The Titan blocker offers the ultimate deterrent against vehicular attacks having been tested in both the UK and USA. It was fully tested at TRL with the N2 7.5 ton vehicle travelling at 80kph and also to the U.S DOS standard in Texas. This was the first blocker to be tested under the PAS68 and US DoD test programs.

Safety

Fully skitred riser, designed to ensure that arm and leg injury by moving parts is not possible.

Operation

Hand pump supplied for manual raising and manual release for lowering.

Accumulators can be added to provide emergency operation

Reliable and durable